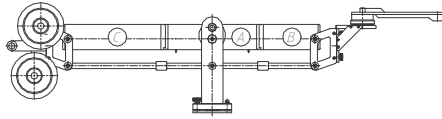


# JAN JIB SYSTEM SPECIFICATIONS

Arm reach	1.05 Mtr	3'5"
Operational length	2.12 Mtr	6'11"
Max. platform height	1.83 Mtr	6'0"
Max. load capacity	45 Kg	99 lbs

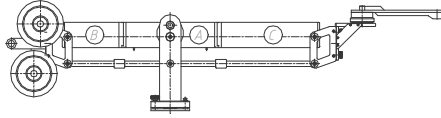
TUBE 122



A	Trunnion part
B	End section short
C	End section long
D	Extension 600mm
E	Extension 1200mm

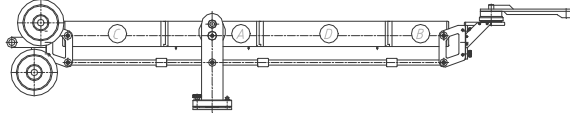
Arm reach	1.24 Mtr	4'1"
Operational length	2.12 Mtr	6'11"
Max. platform height	1.97 Mtr	6'6"
Max. load capacity	45 Kg	99 lbs

TUBE 122



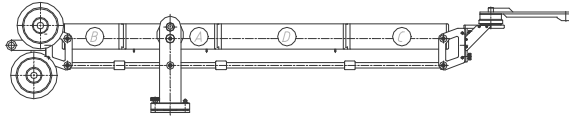
Arm reach	1.65 Mtr	5'5"
Operational length	2.72 Mtr	8'11"
Max. platform height	2.26 Mtr	7'5"
Max. load capacity	45 Kg	99 lbs

TUBE 122



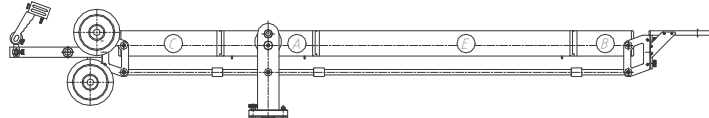
Arm reach	1.84 Mtr	6'1"
Operational length	2.72 Mtr	8'11"
Max. platform height	2.40 Mtr	7'10"
Max. load capacity	38 Kg	84 lbs

TUBE 122



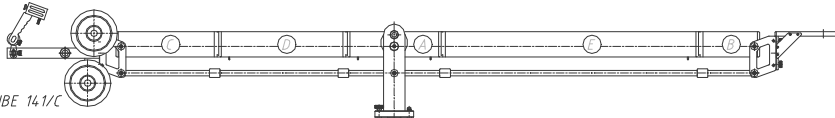
Arm reach	2.00 Mtr	6'7"
Operational length	3.36 Mtr	11'0"
Max. platform height	2.94 Mtr	9'8"
Max. load capacity	41 Kg	90 lbs

TUBE 141/C



Arm reach	2.00 Mtr	6'7"
Operational length	3.96 Mtr	13'0"
Max. platform height	2.94 Mtr	9'8"
Max. load capacity	45 Kg	99 lbs

TUBE 141/C



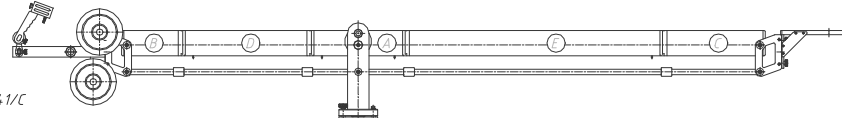
Arm reach	2.20 Mtr	7'2"
Operational length	3.36 Mtr	11'0"
Max. platform height	3.08 Mtr	10'1"
Max. load capacity	21 Kg	46 lbs

TUBE 141/C



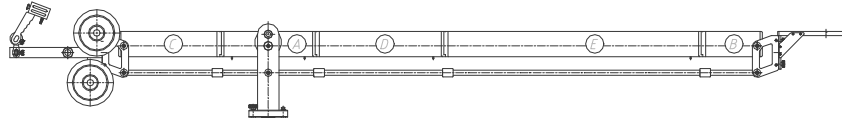
Arm reach	2.20 Mtr	7'2"
Operational length	3.96 Mtr	13'0"
Max. platform height	3.08 Mtr	10'1"
Max. load capacity	45 Kg	99 lbs

TUBE 141/C



Arm reach	2.60 Mtr	8'6"
Operational length	3.96 Mtr	13'0"
Max. platform height	3.37 Mtr	11'1"
Max. load capacity	25 Kg	55 lbs

TUBE 141/C



Arm reach	2.80 Mtr	9'2"
Operational length	3.96 Mtr	13'0"
Max. platform height	3.51 Mtr	11'6"
Max. load capacity	11 Kg	24 lbs

TUBE 141/C

